

VEST Network License Manager



VEST, Inc. 3250 W, Big Beaver Road, Suite 440, Troy, MI 48084 USA

01 248649 9550 sales@VESTusa.com VESTusa.com

VEST, Inc.

VEST Network License Manager Software Product License Agreement

Carefully read the terms and conditions of this Agreement before proceeding further. Using this software indicates your acceptance of these terms and conditions.

License

VEST, Incorporated (“we, our, us”) grants the Licensee (“you, your”) a non-transferable and non-exclusive license to use the software product in the specified quantity only, subject to and conditioned on Licensee’s continuous compliance with this Agreement and payment of the applicable fees.

You may not:

1. Distribute, sublicense or copy any portion of the licensed software product
2. Modify or prepare derivative works from the licensed software product
3. Use the licensed software product in multiple computers or multiple user arrangements unless that use is covered by an individual license for each computer or user.

You agree that the licensed software product belongs to us and you agree to keep confidential and use your best efforts to prevent and protect the contents of the licensed software product from unauthorized disclosure.

Limited Warranty

VEST, Inc. warrants that, as of the date on which the Software Products are delivered and licensed to Licensee and for ninety (90) days thereafter, the (“Warranty Period”), the Software Products will provide the general features and functions described in the User Documentation of the Software Product. VEST’s entire liability and Licensee’s exclusive remedy during the Warranty Period (“Limited Warranty”) will be, (i) to attempt to correct or work around errors, if any, or (ii) to refund the Software fees, if any, paid by Licensee. Such refund is subject to the return, of the Software License by the Licensee, if the license has already been issued. This warranty does not cover damage caused by virus, improper use or neglect. The Software product is furnished "AS IS" and without warranty as to the performance or results you may obtain by using the licensed software product or that it will be error free. You assume the entire risk as to the results and performance of the licensed software product. To get warranty service during the 90-day Warranty Period, you may return the product license to VEST, Inc., with a description of the problem.

Limitations of Liability

YOU UNDERSTAND AND AGREE AS FOLLOWS:

- A. Warranties in this Agreement replace all other warranties, express or implied, including any warranties of merchantability or fitness for a particular purpose. We disclaim and exclude all other warranties.
- B. We will not be liable for any loss or damage caused by delay in furnishing a licensed software product or any other performance under this Agreement.
- C. Our entire liability and your exclusive remedies for our liability of any kind (including liability for negligence) for the licensed software product covered by the agreement and all other performance or non-performance by us under or related to this Agreement are limited to the remedies specified by this Agreement.
- D. In no event will our liability of any kind include any special incidental or consequential damages, for loss of profits, use, revenue or data; or for business interruption (regardless of the legal theory for seeking such damages or other liability. In addition, the liability of VEST, Inc., and its partners, arising out of or relating to any VEST, Inc. software or service will not exceed the amount paid or payable by Licensee for such software or services.
- E. Subscribers to manufacturer and other data services related to our Software hereby acknowledge and agree that the services are provided by VEST, Inc. on an ‘As Is’ basis, and the Subscriber’s access and use of the service is at its sole risk. VEST, Inc. and the manufacturers expressly disclaim all warranties of any kind, whether express or implied, including any damages that may result from the use of this service. VEST Inc. makes no warranty that the services will meet the requirements of the Subscriber, or that the services will be uninterrupted, or error-free, nor does VEST Inc. make any warranty as to the results that may be obtained through the use of the services. Subscriber understands and agrees that any data downloaded through the use of the service is done at the sole risk of the Subscriber and the Subscriber will be solely responsible for any damage which might result from use of this data.
- F. Special notice to consumers: some states do not allow the exclusion of implied warranties, so the above exclusion may not apply to you. The warranty gives you special legal rights, and you may also have other rights, which vary from state to state.

Termination

This Agreement is effective until terminated. You may terminate it any time by returning the licensed software product. It will also terminate if you do not comply with any term or condition of this agreement. VEST, Inc. may, as an alternative to termination, suspend Licensee’s license if the Licensee fails to make payment to VEST, Inc. or its Distributor, or otherwise fails to comply with the provisions of this Agreement.

General

You are responsible for installation, management and operation of the licensed software product.

© 2002-2023, VEST, Inc. All rights reserved.

Contents

Installation	1
System Requirements	1
Software Installation	1
Configure Firewall	2
Activate VEST Network License Manager	2
Start VEST Network License Manager	3
About License Server	3
Transfer License	4
Submit Transfer Request	4
VEST Network License Manager	6
Server Administration	6
License Usage	7
License Details	8
Help	8
Close	9

Installation

The installation program creates all the required subdirectories and installs the VEST Network License Manager on your system.

System Requirements

- Windows Server 2012/2016, Windows 10 (64-Bit) operating system.
- Microsoft .NET Framework Version 4.5 or higher.

Software Installation

1. Run VEST-Network-License_Manager.exe

The VEST Network License Manager installation program starts and guides you through the installation process.

VEST Network License Manager is now installed on your system.

VEST Network License Manager is now accessible from the VEST menu. Windows Start > All Programs > VEST > VEST Network License Manager

A VEST Network License Manager shortcut icon is also created on the desktop.



Note:

Install the software only on the computer that will control licensing for all VEST clients on a network.

Configure Firewall

In the Windows/Antivirus Firewall, add the following exceptions in the server:

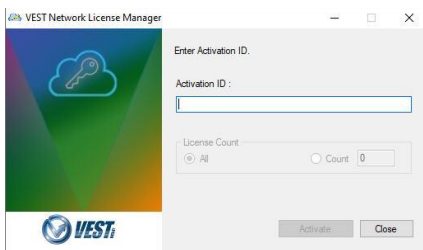
- VEST Network License ManagerProgram.
- Port number (VEST Default:7075).

Note:

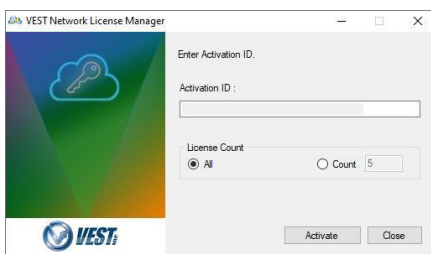
The exceptions are to be added in both Inbound and Outbound Rules.

Activate VEST Network License Manager

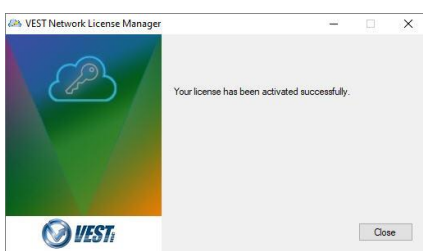
1. Double click the VEST Network License Manager desktop icon.
Activation Screen displays.
2. Enter **Activation ID**. (received via mail from FLEXNET Operations)
Activation ID is validated, and available count of licenses displayed.



3. Select the **Count** option and Enter Number of Licenses that need to be activated. By default, option ALL is selected.



4. Click **Activate**.
The license is activated successfully.



Start VEST Network License Manager



Double click the VEST Network License Manager desktop icon.

alternatively,

Click Start > All Programs > VEST > VEST Network License Manager

VEST Network License Manager starts, and the icon displays in the System tray.

Stop License Server

Right click the VEST Network License Manager icon in the System tray and click **Stop Server**.



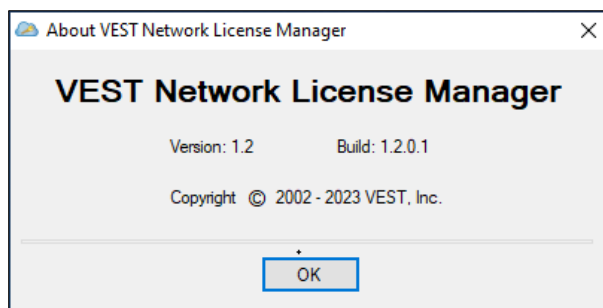
Exit License Server

Right click the VEST Network License Manager icon in the System tray and click **Exit**.

About License Server

Right-click the VEST Network License Manager icon in the System tray and click **About**.

The About VEST Network License Manager dialog box displays the Server version and Build details.

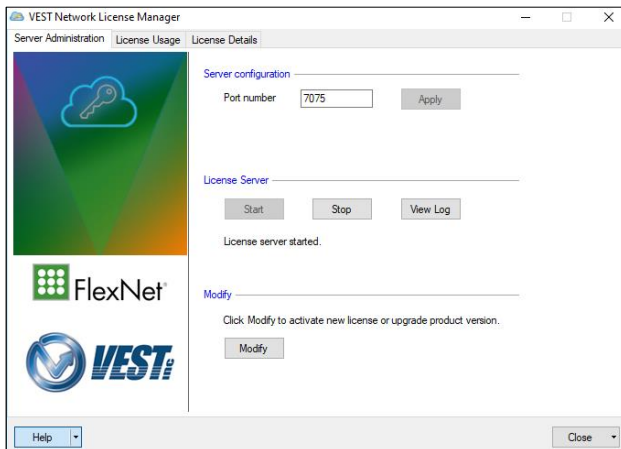


Transfer License

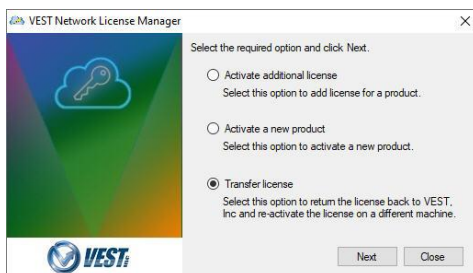
The fully activated Network License has the **Modify** button available to return the software to VEST. It helps deactivate the software in the current machine and reactivate it on a different machine.

Submit Transfer Request

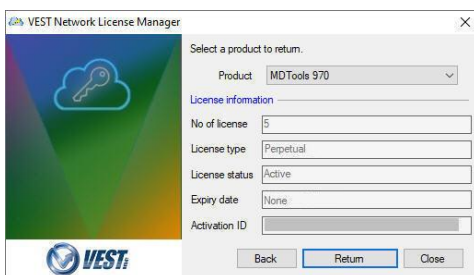
1. Double click the VEST Network License Manager icon from the desktop. The VEST Network License Manager displays.



2. Click **Modify**.
3. Select the **Transfer license** option.

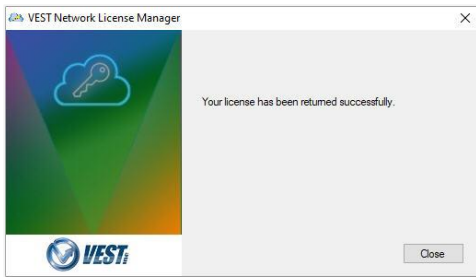


4. Click **Next**.



5. Select the **Product**.
6. Verify the **License information**, if required.
7. Click **Return**.

Your License is returned successfully.



Note:

- All licenses from client machines need to be released or returned to transfer the license from the server.
- All the activated licenses from the machine will be erased for the selected Activation ID of the selected product.
- After successful return, the same Activation ID should be used to activate the server on a different machine.

VEST Network License Manager

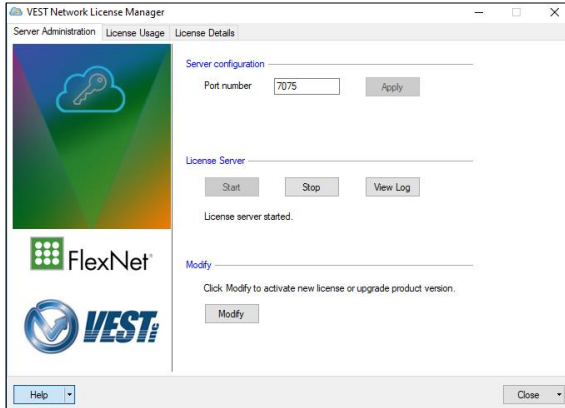
The VEST Network License Manager enables you to configure the License Options and view the License Details.

Server Administration

1. Run the LicenseManager

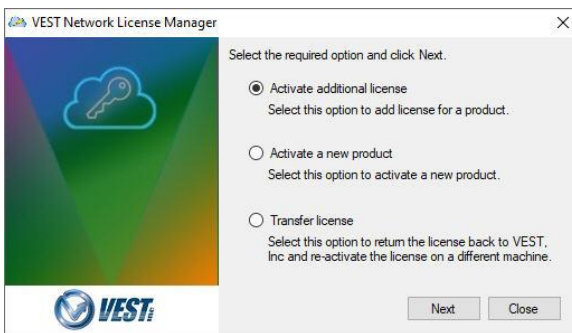
Start > All Programs > VEST > VEST Network License Manager

The VEST Network License Manager dialog with default Port number displays.



2. License flows only through the preset Default Port Number 7075.

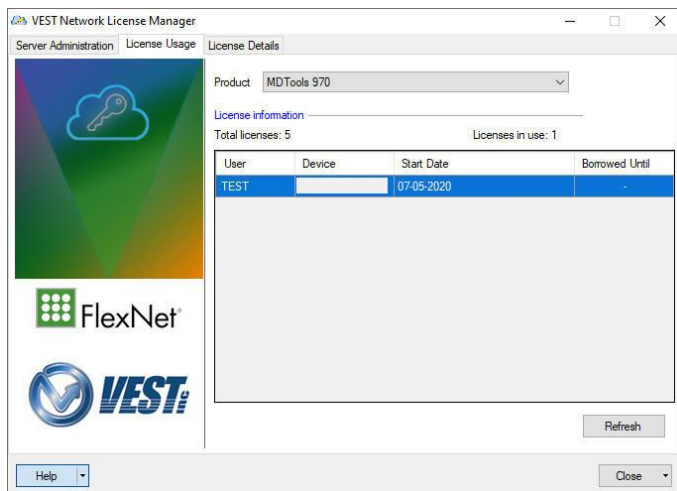
- Click **Stop** to stop the license server.
- Click **Start** to start the license server.
- Click **View Log** to view the log.
- Click **Modify** to display License Server Product Authorization.



- Select the **Activate additional license** option to get additional licenses.
- Select the **Activate a new product** option to activate additional VEST products that you purchased.
- Select the **Transfer license** option to return the license to VEST and re-activate the license on a different machine.

License Usage

VEST Network License Manager – License Usage

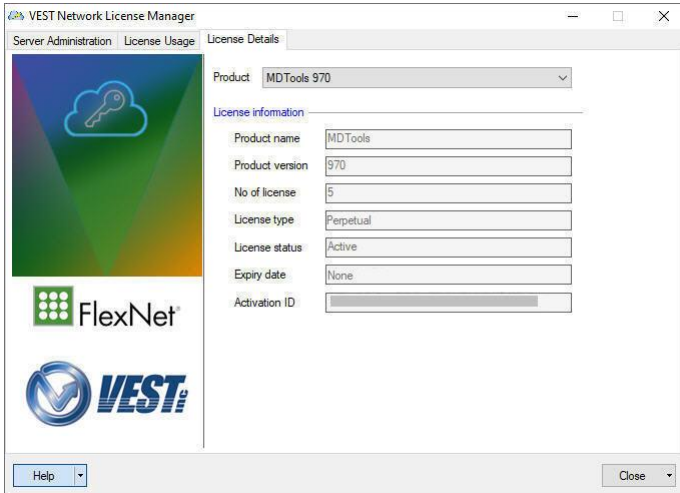


1. Select **Product** to view the License products.
 - **Total licenses** show the number of licenses available.
 - **Licenses in use** shows the number of licenses currently in use.
 - The grid shows the floating licenses with **Start Date** and Borrowed Licenses with **Borrowed** Until date.
2. Click **Refresh** to refresh the license information.

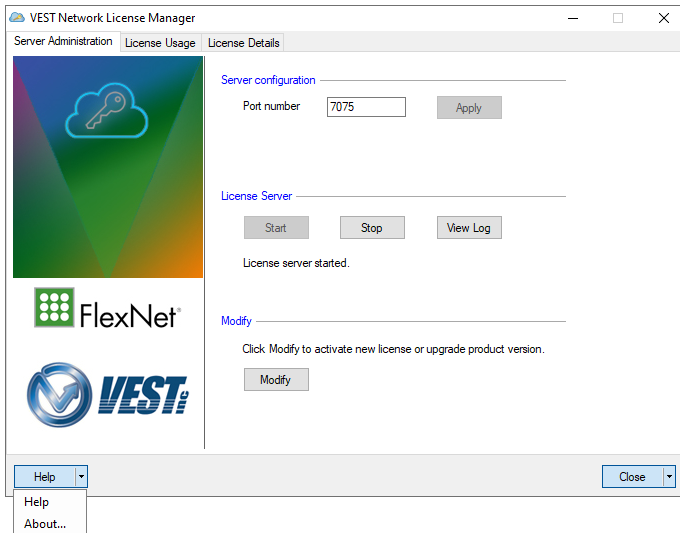
License Details

1. Select **Product** to view the license details.

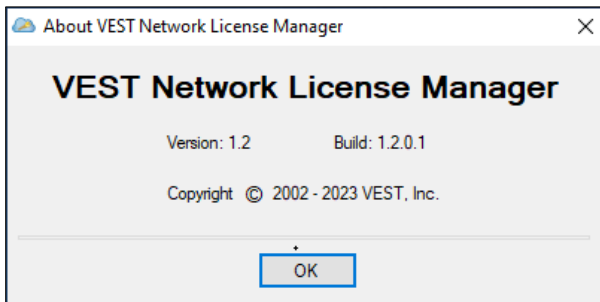
License information displays the license details of the selected product.



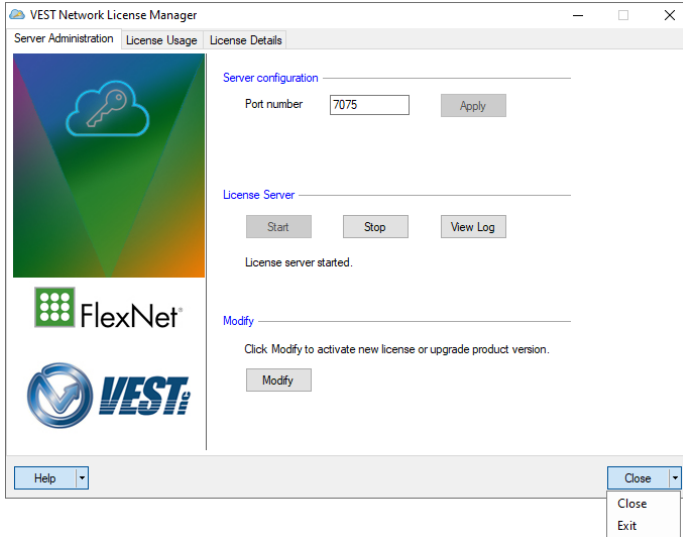
Help



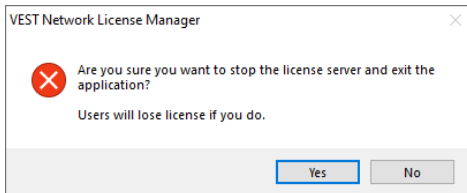
2. Click **Help** to open VEST Network License Manager Help.
3. Click Help > **About** to display the Server Version and Build details.



Close



4. Click **Close** to close the VEST Network License Manager Dialog. Application closed with services running background and serving Licenses.
5. Click **Close > Exit** to stop the serving Licenses and close the VEST Network License Manager. All Background services stopped and License will not be served.



Note:

You can view the **Help** and **Close** the VEST Network License Manager from any tab.